

**Ausführung**  
construction

EMV-Wellrohrverschraubung  
EMC conduit fitting

**Werkstoff**  
material

Polyamid 6, UL94 V0,  
Messing vernickelt  
polyamide 6, UL 94 V0,  
nickel-plated brass

**Temperatur**  
temperature

-40°C - +105°C

**kurzzeitig**  
short term

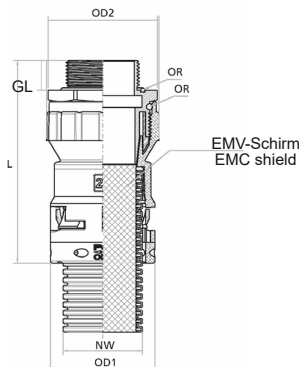
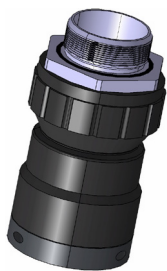
+150°C

**Schutzart**  
protection

IP68 / IP69K

**gemäß**  
according to

IEC EN 61386



## metrisch / metric

| Art. Nr. schwarz<br>art. no. black | Gewinde<br>thread | NW<br>DN | ID<br>mm | GL<br>mm | OD1<br>mm | OD2<br>mm | L<br>mm | VPE Stk.<br>unit pcs. |
|------------------------------------|-------------------|----------|----------|----------|-----------|-----------|---------|-----------------------|
| MSMEMC8B10M16                      | M16x1,5           | 10       | 10,0     | 10       | 20        | 24,5      | 61,4    | 10                    |
| MSMEMC8B12M16                      | M16x1,5           | 12       | 12,0     | 10       | 24        | 27        | 65,2    | 10                    |
| MSMEMC8B17M20                      | M20x1,5           | 17       | 16,2     | 10       | 30        | 31,5      | 69,4    | 10                    |
| MSMEMC8B23M25                      | M25x1,5           | 23       | 21,7     | 11       | 38        | 39,5      | 84,5    | 5                     |
| MSMEMC8B29M32                      | M32x1,5           | 29       | 29,1     | 13       | 45,5      | 47,5      | 88,5    | 5                     |
| MSMEMC8B36M40                      | M40x1,5           | 36       | 36,0     | 13       | 57        | 56,5      | 98,5    | 2                     |
| MSMEMC8B48M50                      | M50x1,5           | 48       | 47,8     | 14       | 68        | 72,5      | 106,5   | 2                     |

## PG

| Art. Nr. schwarz<br>art. no. black | Gewinde<br>thread | NW<br>DN | ID<br>mm | GL<br>mm | OD1<br>mm | OD2<br>mm | L<br>mm | VPE Stk.<br>unit pcs. |
|------------------------------------|-------------------|----------|----------|----------|-----------|-----------|---------|-----------------------|
| MSMEMC8B10P09                      | 9                 | 10       | 10,0     | 10       | 20        | 24,5      | 61,4    | 10                    |
| MSMEMC8B12P11                      | 11                | 12       | 12,0     | 10       | 24        | 27        | 65,2    | 10                    |
| MSMEMC8B17P13                      | 13,5              | 17       | 16,2     | 10       | 30        | 31,5      | 69,4    | 10                    |
| MSMEMC8B17P16                      | 16                | 17       | 16,4     | 10       | 30        | 31,5      | 69,4    | 10                    |
| MSMEMC8B23P21                      | 21                | 23       | 21,7     | 11       | 38        | 39,5      | 84,5    | 5                     |
| MSMEMC8B29P29                      | 29                | 29       | 29,1     | 13       | 45,5      | 50        | 88,5    | 5                     |
| MSMEMC8B36P36                      | 36                | 36       | 36,0     | 13       | 57        | 56,5      | 98,5    | 2                     |
| MSMEMC8B48P48                      | 48                | 48       | 47,8     | 14       | 68        | 72,5      | 106,5   | 2                     |

Die **SMEMC Verschraubung** wird häufig im Industrie und Bahn-Bereich verwendet, um eine hohe Schirmung an den Kabeln zu gewährleisten. Die Klemmung von 360° zwischen Kupfergeflecht und Adapter garantiert einen optimalen Schirmwirkungsgrad. Die niedrige Impedanzverbindung lässt hohe Kurzschlussströme zu.

Zur Anwendung für Apparate, Anlagen und Systeme, welche die Anforderungen der EU EMV-Richtlinie erfüllen müssen bei gleichzeitiger Abdichtung über das Wellrohr von bis zu IP69K.

**SMEMC fittings** are mainly used in the industrial and railway fields with the aim to screen the cables from electromagnetic interferences. An optimal screening is guaranteed through 360° clamping of the copper braid to the fitting. Low impedance connection allows high short circuit currents to pass.

For use in applications, installations and systems where the requirements of EC EMC regulations must be fulfilled and tightness at the same time and complies unitl to IP69K.

